



## Instructions

---

# VERITY® 1810 Monitor pH Calibration Utility

Part Number 11000026

Before running samples for the first time, calibrate the pH sensor using the VERITY 1810 Monitor pH Calibration Utility.

The VERITY 1810 Monitor pH Calibration Utility is supplied on the Gilson Software USB, which is provided with the pH flow cell.

## TABLE OF CONTENTS

---

Install the Utility | 2

Prepare to Run the Utility | 2

Start the Utility | 2

Use the Utility | 3



## Install the Utility

### Pre-Installation Checklist

Before beginning the installation:

- Log on as a Windows® Administrator
- Close all running applications
- Temporarily disable antivirus software
- Temporarily disable firewall

### Installation

The installation of the VERITY 1810 Monitor pH Calibration Utility proceeds as follows:

1. Insert the Gilson Software USB into the USB port and then follow the instructions in **Start Here.pdf** to navigate to the installation file(s).
2. Install the VERITY 1810 Monitor pH Calibration Utility. Follow the on-screen instructions.
  - If a **User Account Control** window appears, click **Yes**.
  - If prompted with a warning about installing driver software, select **Install this driver software anyway**.

The installation path on a Windows® 7 (32-bit) system is:

C:\Program Files\Gilson\Utilities\VERITY 1810 Conductivity and pH Monitor\pH Calibration Utility.

The installation path on a Windows® 10 or Windows® 7 (64-bit) system is:

C:\Program Files (x86)\Gilson\Utilities\VERITY 1810 Conductivity and pH Monitor\pH Calibration Utility.


### Prepare to Run the Utility

1. Ensure that plumbing and electrical connections have been made as described in the user's guide.

For communication to occur, the instrument must be connected via a USB connection to the PC.
2. Obtain pH 7, pH 4, and pH 10 buffer solutions.

### Start the Utility

To start the VERITY 1810 Monitor pH Calibration Utility, click the **Start** button and then select **(All Programs) > Gilson Applications > (VERITY 1810 Conductivity and pH Monitor) > VERITY 1810 Monitor pH Calibration Utility**.

- If prompted to exit the **GEARS Application**, right-click on the icon () in the Windows system tray, and then select **Exit**.
- If any **Windows Security Alerts** appear with **Gilson, Inc.** as the **Publisher**, click **Allow access**.

The VERITY 1810 Monitor pH Calibration Utility window will appear, and if communicating with the instrument, the **Serial Number** and **FW Version** will be displayed.

## Use the Utility

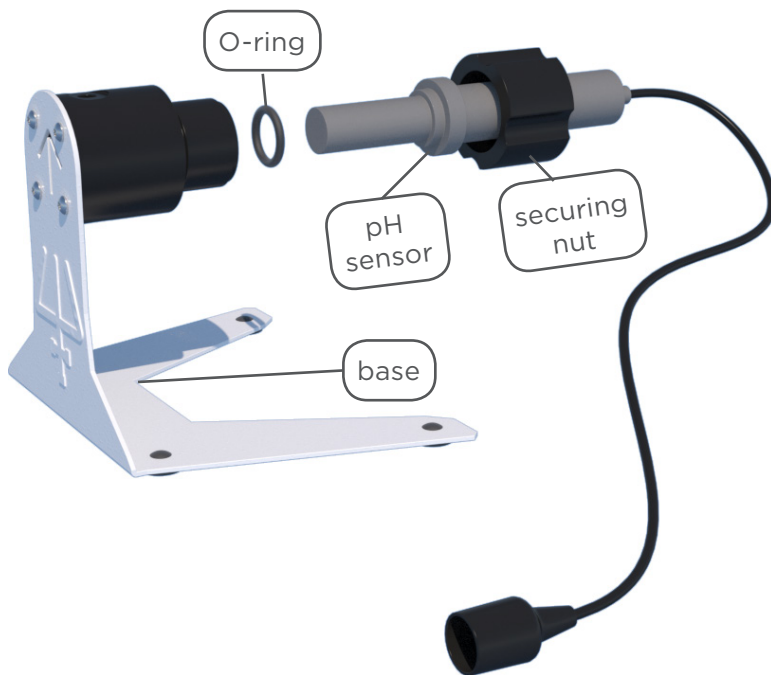
Remove the pH sensor from the pH Flow Cell (if installed) or from the storage solution.

To remove the pH sensor from the pH Flow Cell:

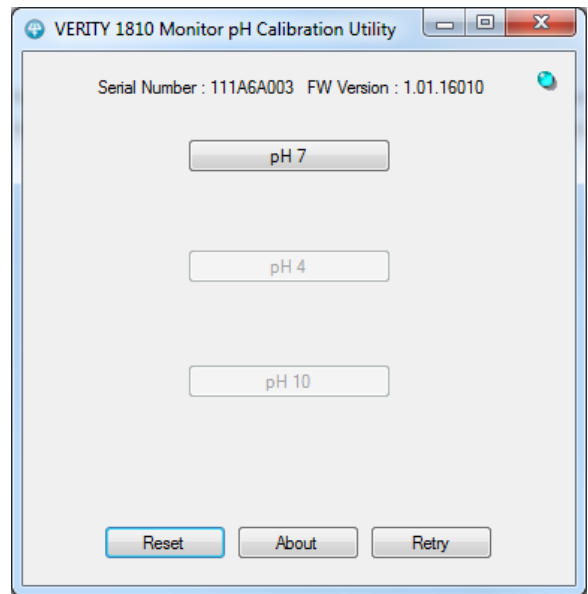
1. Remove the securing nut.
2. Remove the pH sensor.

### NOTICE

Be careful with the end of the pH sensor. The time the end of the pH sensor is not submerged should be minimized.



**Figure 2**  
pH Flow Cell (Exploded View)



**Figure 1**  
VERITY® 1810 Monitor pH Calibration Utility





## pH 7 Calibration

1. Click **pH 7**.
2. Use a transfer pipet to rinse the outside of the pH sensor with deionized water and then blot the pH sensor dry with a lint-free cloth.
3. Use a transfer pipet to rinse the outside of the pH sensor with pH 7 solution.
4. Submerge the pH sensor in the pH 7 solution.
5. Click **OK**.
6. Wait two minutes.
7. To repeat this calibration, click **Retry** or **Reset**.

## pH 4 Calibration

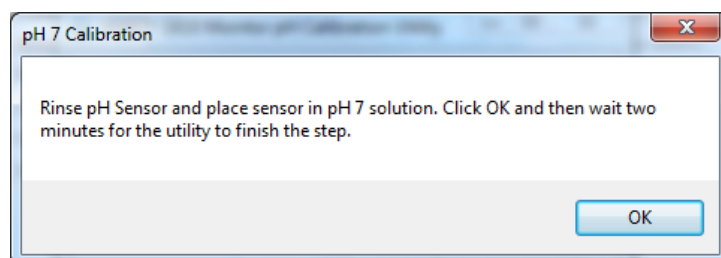
1. Click **pH 4**.
2. Wipe the outside of the pH sensor with a lint-free cloth.
3. Use a transfer pipet to rinse the outside of the pH sensor with pH 4 solution.
4. Submerge the pH sensor in the pH 4 solution.
5. Click **OK**.
6. Wait two minutes.
7. To repeat this calibration, click **Retry**. To repeat all calibrations, click **Reset**.

## pH 10 Calibration

1. Click **pH 10**.
2. Wipe the outside of the pH sensor with a lint-free cloth.
3. Use a transfer pipet to rinse the outside of the pH sensor with pH 10 solution.
4. Submerge the pH sensor in the pH 10 solution.
5. Click **OK**.
6. Wait two minutes.
7. To repeat this calibration, click **Retry**. To repeat all calibrations, click **Reset**.
8. Use a transfer pipet to rinse the outside of the pH sensor with deionized water and then blot the pH sensor dry with a lint-free cloth.
9. Return the pH sensor to storage solution or install in the pH Flow Cell (refer to the diagram, if necessary).

## Close the Utility

Click the X in the upper right corner to close the utility.



**Figure 3**  
On-screen Instructions for pH 7 Calibration